

Metropolitan Stone



MANIFATTURA
DEL DVCA



Metropolitan Stone

“...da sempre la pietra funge da principale legante tra le diverse culture metropolitane: si tratta di un filo conduttore che ci riporta al calore, alla durata, alla bellezza ed alla naturalezza di questa materia.

“Metropolitan Stone”, nasce dalla pietra e come la pietra, attraverso l’usura del tempo, acquista personalità e carattere.

Rappresenta l’ideale parametro di comparazione per un gusto universale nel pensare e rappresentare le superfici architettoniche...”



Parigi

New York

Stein war schon immer das wichtigste Bindemittel zwischen den verschiedenen metropolitane Kulturen: ein Leitfaden, der uns die Wärme, Dauerhaftigkeit, Schönheit und Natürlichkeit dieser Materie vermittelt.

„Metropolitan Stone“ entsteht aus Stein und nimmt genauso wie Stein durch die Abnutzung der Zeit Persönlichkeit und Charakter an.

Ein idealer Vergleichsparameter für einen universellen Geschmack bei der Erinnerung und Darstellung der architektonischen Oberflächen.

Depuis toujours, la pierre constitue le lien principal entre les différentes cultures métropolitaines : il s'agit d'un fil conducteur qui nous ramène à la chaleur, à la durée, à la beauté et au caractère naturel de ce matériau.

“Metropolitan Stone” naît de la pierre, et comme la pierre, il traverse l'usure du temps, en acquérant personnalité et caractère.

C'est le paramètre de comparaison idéal pour un goût universel de concevoir et de représenter les surfaces architecturales.

Stone has always been a connection means between different urban cultures, a main theme that makes one think of its warmth, duration, beauty, and naturalness. “Metropolitan Stone” stems from stone: its personality and temper increase with the wearing effect of time, just like the personality and temper of stone do.

It constitutes an ideal reference parameter for the universal taste of designing and representing architectural surfaces.



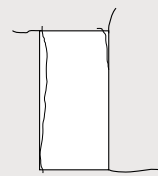
MANIFATTURA DEL DVCA



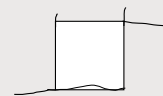
Berlino

Milano

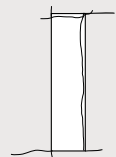
Gres Fine Porcellanato .
Fine Porcelain Stoneware . Grès Fiiin Porcelainé . Feinsteinzeug



40x80,3 (16"x32") Nat.
39,6x79,4 (16"x32") Lapp. Rett.



39,6x39,6
(16"x16") Nat.



19,7x79,4
(8"x32") Lapp. Rett.



New York

0670030 New York Nat. 40x80,3
0512022 Matita Vetro Gold Rett. 2x59,8
0670020 Parigi Nat. 40x80,3



Parigi





Parigi

0670020 Parigi Nat. 40x80,3







New York



0670030 New York Nat. 40x80,3
0670020 Parigi Nat. 40x80,3



0670030 New York Nat. 40x80,3
0512022 Matita vetro rett. Gold 2x59,8

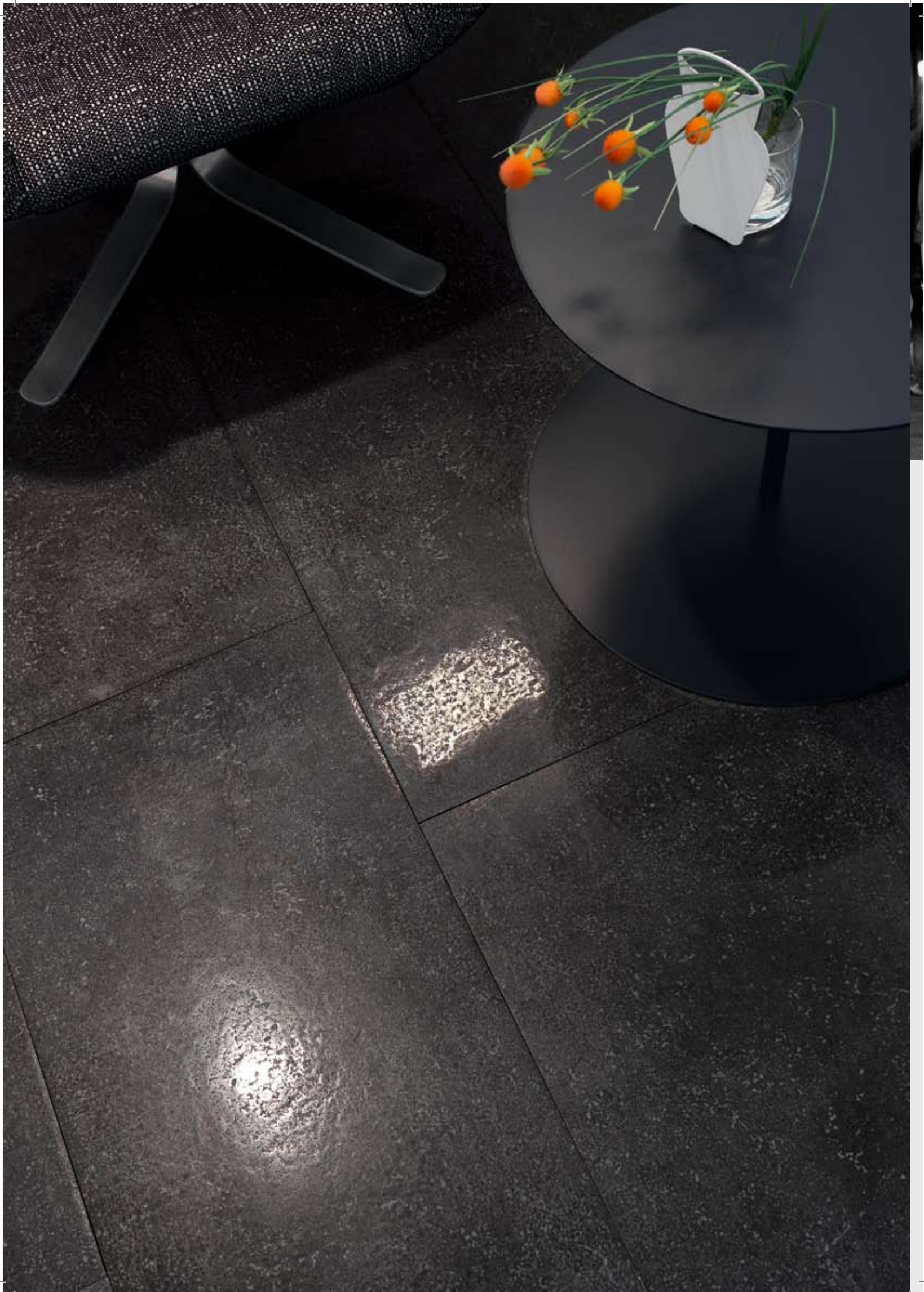


0670001 Milano Lapp. Rett. 39,6x79,4



Milano



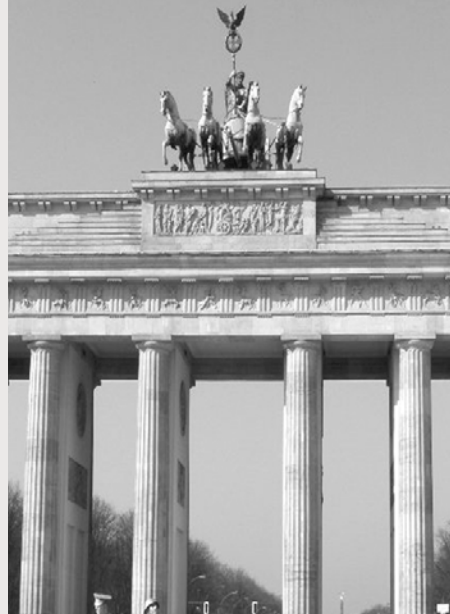




0670001 Milano Lapp. Rett.
39,6x79,4



Milano



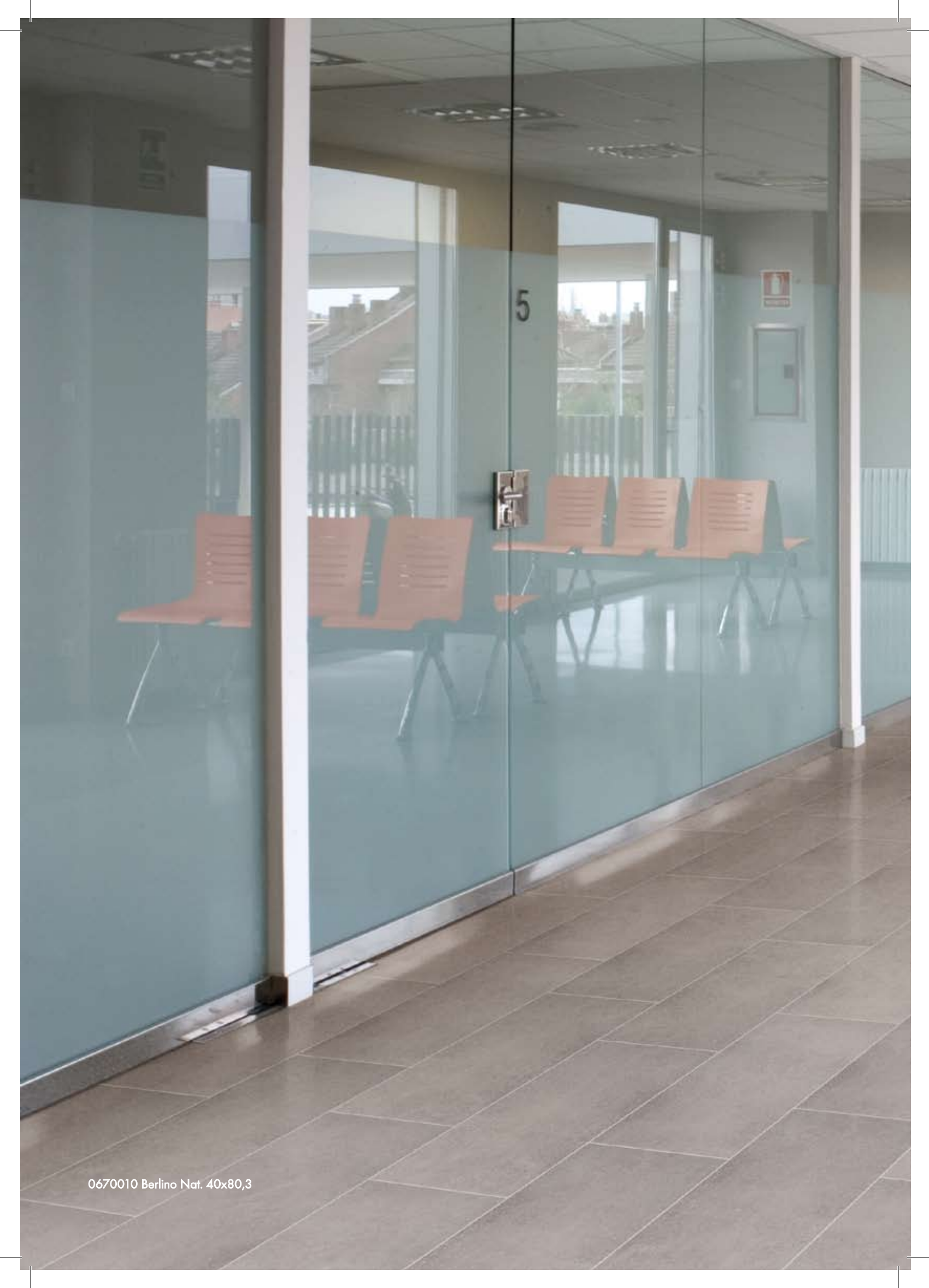
0670011 Berlino Lapp. Rett.
39,6x79,4

0670013 Berlino Lapp. Rett.
19,7x79,4



Berlino





Berlino



Metropolitan Stone



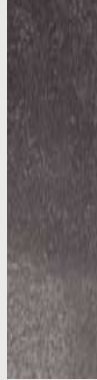
MANIFATTURA
DEL DVCA



0670000 Milano Nat.
40x80,3 (16"x32")



0670001 Milano Lapp. Rett.
39,6x79,4 (16"x32")



0670003 Milano Lapp. Rett.
19,7x79,4 (8"x32")

Milano



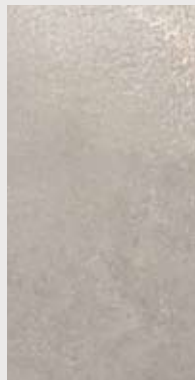
10,5 mm



0670005 Milano Lapp. Rett.
39,6x39,6 (16"x16")



0670010 Berlino Nat.
40x80,3 (16"x32")



0670011 Berlino Lapp. Rett.
39,6x79,4 (16"x32")

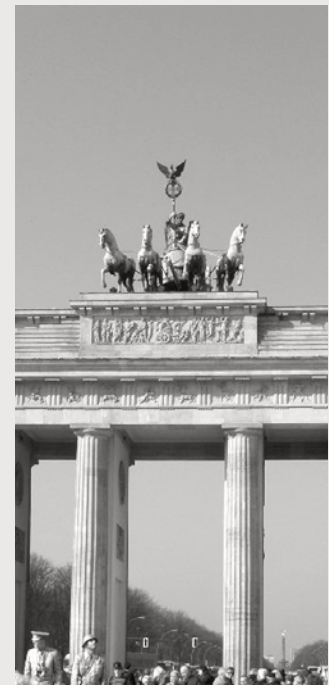


0670013 Berlino Lapp. Rett.
19,7x79,4 (8"x32")

Berlino



10,5 mm



0670015 Berlino Lapp. Rett.
39,6x39,6 (16"x16")

0553119 Matita Alluminio
1,5x45 (3/4"x18")



0512021 Matita Vetro Rett. Silver
2x59,8 (7/8"x24")



0512023 Ang. Vetro Rett. Silver
2x2 (7/8"x 7/8")

0512022 Matita Vetro Rett. Gold
2x59,8 (7/8"x24")



0512024 Ang. Vetro Rett. Gold
2x2 (7/8"x 7/8")



0670008 Mosaico Nat. Rett. Freddo
19,7x39,6 (8"x16")



0670007 Battiscopa Milano Nat.
0670017 Battiscopa Berlino Nat.
8x40(3 1/4"x16")

Gres Fine Porcellanato naturale - Lappato rettificato
 Fine Porcelain Stoneware . Grès Fin Porcelainé . Feinsteinzeug



0670020 Parigi Nat.
 40x80,3 (16"x32")



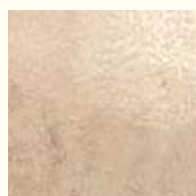
0670021 Parigi Lapp. Rett.
 39,6x79,4 (16"x32")



0670023 Parigi Lapp. Rett.
 19,7x79,4 (8"x32")

Parigi

 10,5 mm



0670025 Parigi Lapp. Rett.
 39,6x39,6 (16"x16")



0670030 New York Nat.
 40x80,3 (16"x32")



0670031 New York Lapp. Rett.
 39,6x79,4 (16"x32")



0670033 New York Lapp. Rett.
 19,7x79,4 (8"x32")

New York

 10,5 mm



0670035 New York Lapp. Rett.
 39,6x39,6 (16"x16")



0553119 Matita Alluminio
 1,5x45 (3/4"x18")

0512021 Matita Vetro Rett. Silver
 2x59,8 (7/8"x24")

0512023 Ang. Vetro Rett. Silver
 2x2 (7/8"x7/8")

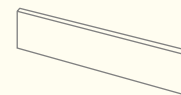


0512022 Matita Vetro Rett. Gold
 2x59,8 (7/8"x24")

0512024 Ang. Vetro Rett. Gold
 2x2 (7/8"x7/8")



0670028 Mosaico Nat. Rett. Caldo
 19,7x39,6 (8"x16")



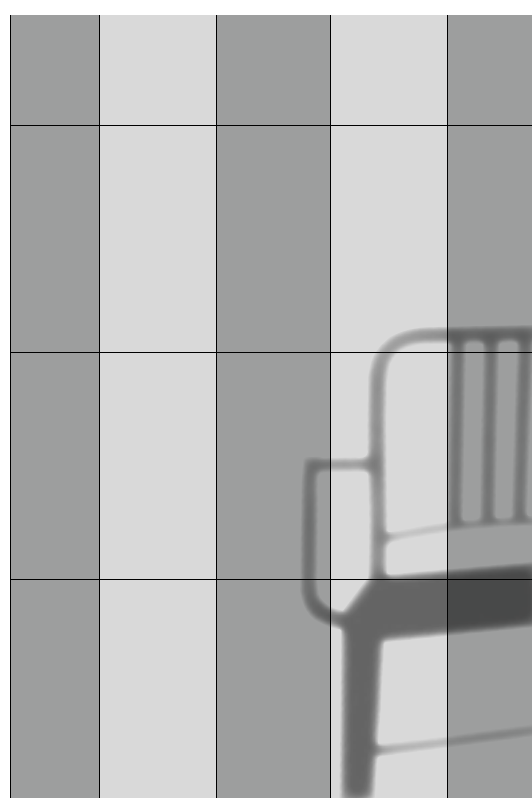
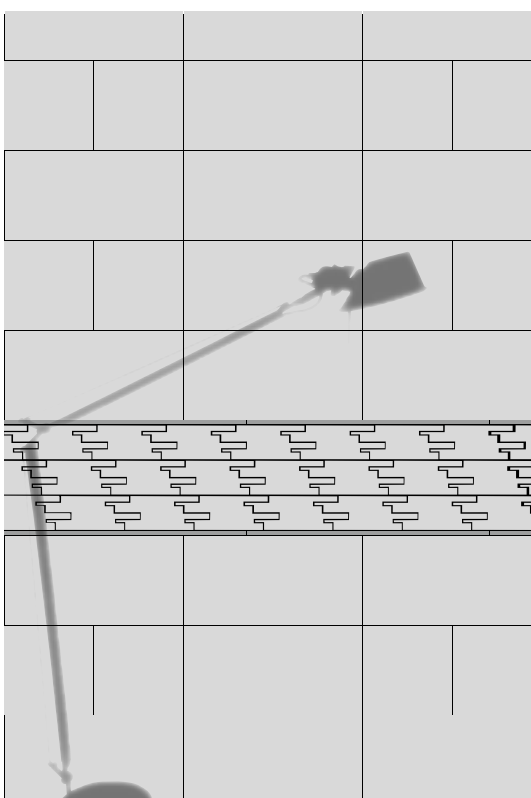
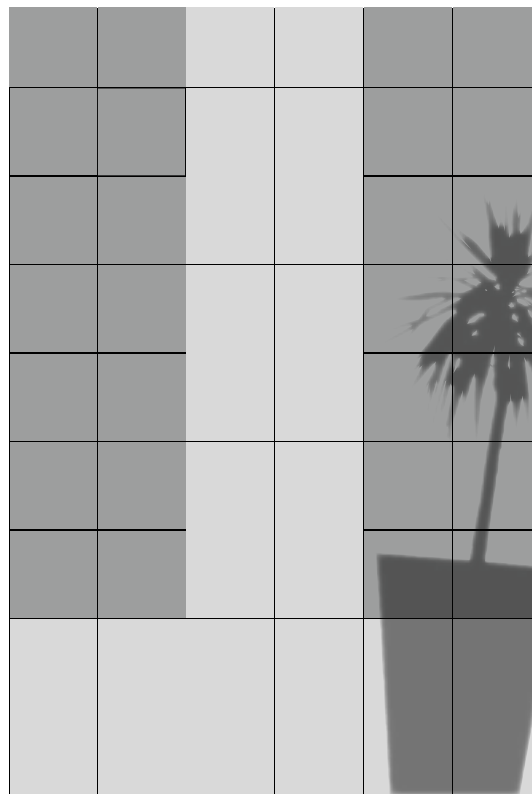
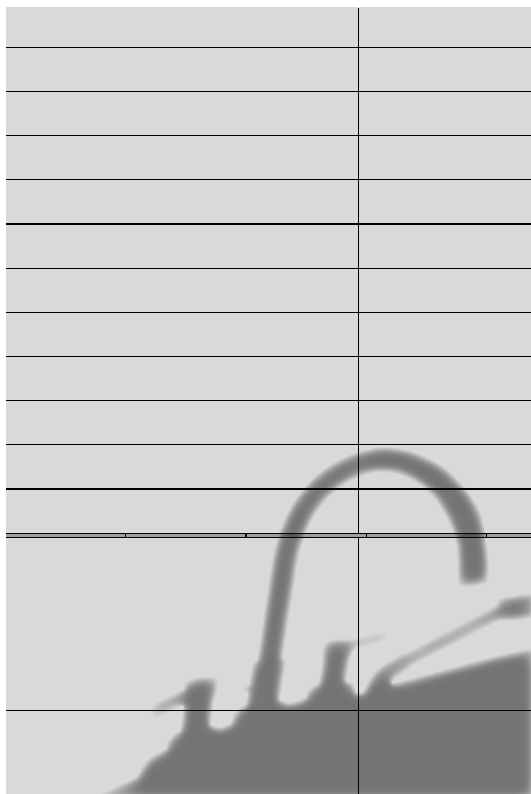
0670027 Battiscopa Parigi Nat.
 0670037 Battiscopa New York Nat.
 8x40(3 1/4"x16")

Metropolitan Stone

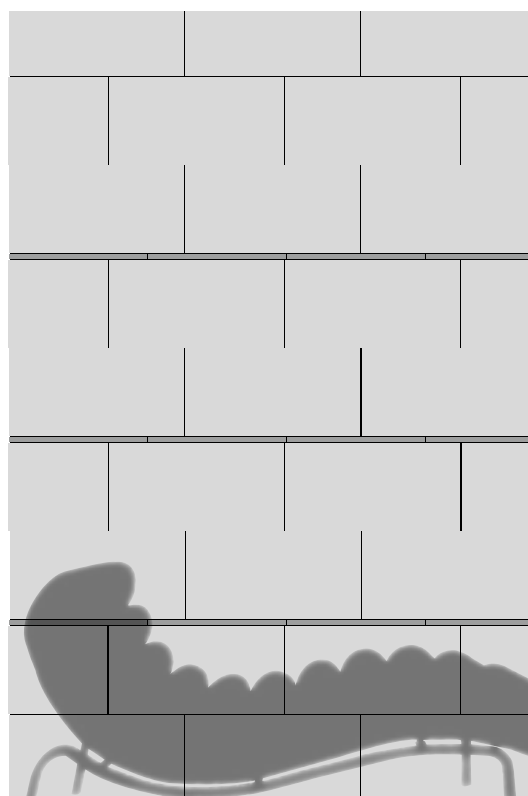
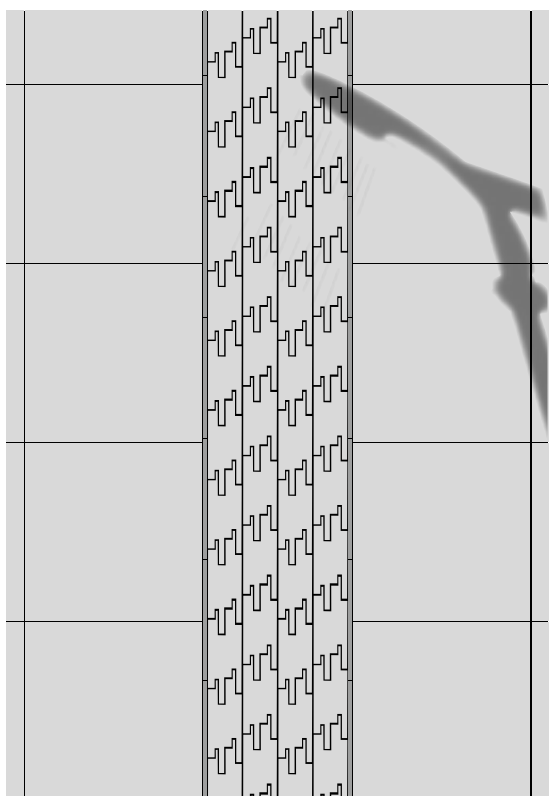
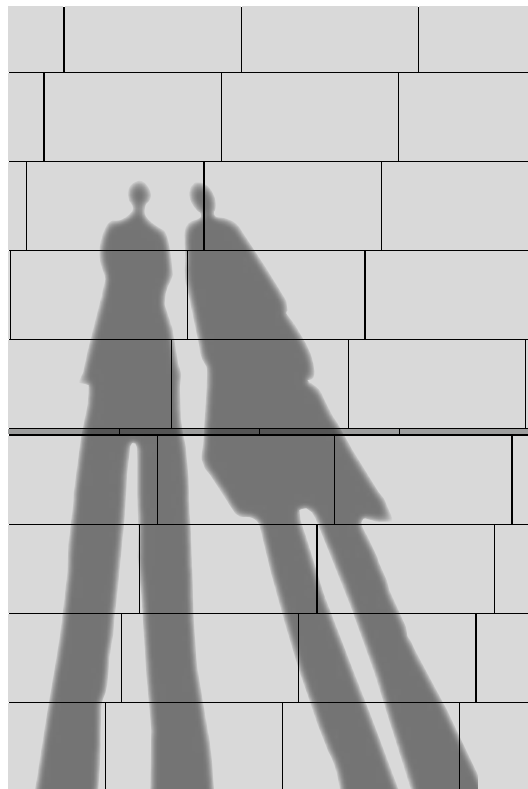
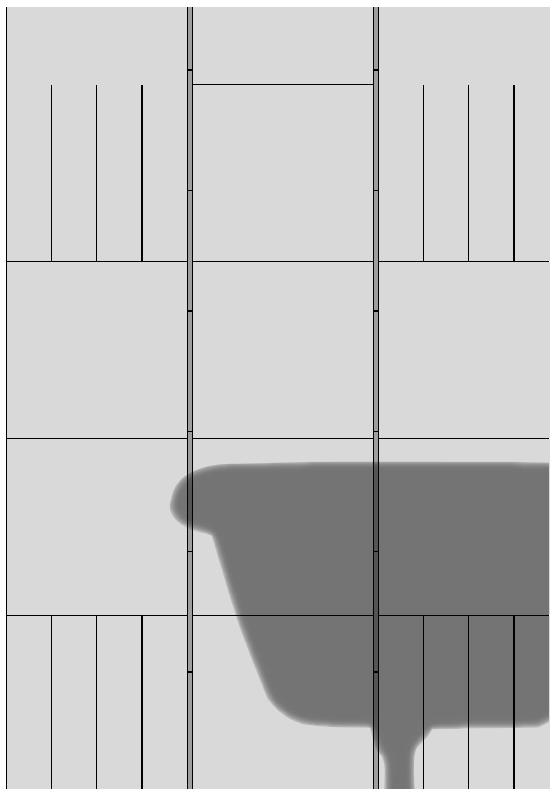


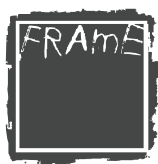
MANIFATTURA
DEL DVCA

Soluzioni di posa
Layout solutions
Calpinages de pose
Verlegungsspiele



Fuga minima consigliata: 2 mm per prodotti rettificati, 3 mm per prodotti naturali.
Minimum suggested joint size: 2 mm for rectified products, 3 mm for natural products.
Joint minimum conseillé: 2mm pour les produits rectifié, 3 mm pour les produits naturels.
Verlegungs empfehlung: mindestens 2 mm Fughe für kalibriert Produkten, 3 mm für naturelle Produkten.





Il progetto “FRAME” rappresenta il risultato di un’importante ricerca basata sulla perfezione della materia applicata ai grandi formati.

“FRAME” racchiude la risposta alle esigenze più attuali di grandi spazi, di linearità e di modularità, introducendo l’importanza della dimensione del formato quale elemento di spazio e di arredo.

The “FRAME” project is the result of major research based on the perfection of the material applied to large sizes.










Le projet «FRAME » représente le résultat d’une importante recherche basée sur la perfection de la matière appliquée aux grands formats.

Das Projekt “FRAME” stellt das Resultat eines Forschungsprojekts zur Perfektionierung der Materie dar, angewendet auf die großen Formate.

Caratteristiche Tecniche

Technical Features - Caracteristiques Techniques - Technische Eigenschaften - Caracteristicas Tecnicas

Gruppo di appartenenza Class Groupe d'appartenance Zugehörigkeitsgruppe Grupo de pertenencia		Grès Fine Porcellanato Fine Porcelain Stoneware Grès fin porcelainé Feinsteinzeug Gres fino porcelánico
secondo EN 14411 Allegato G		

Simbologia	Caratteristica	Unità di misura	Valore Ricchetti	Valore Prescritto	Metodo di Prova
Symbolics Symboles Symbole Simbologias	Features Caracteristiques Eigenschaften Caracteristicas	Unit of mesurement Unité de mesure Masseinheit Unidad de medida	Ricchetti's mean value Valeur moyenne Ricchetti Durchschnitts-Werf-Ricchetti Valor medio Ricchetti	Prescribed value Valeur prescrite Vorgeschriebener Wert Valor prescrito	Test method Méthode d'essai Prüfmethode Método de ensayo
	Dimensione lati Dimensions-Length and width Dimensions-Longueur et largeur Masse-Länge und Breite Dimensiones-Longitud y ancho	%	conforme	+/- 0,6	UNI EN ISO 10545-2
	Rettilineità dei lati Side straightness Rectitude des arêtes Geractlinigkeit der Kanten Rectilinedad de los lados	%	conforme	+/- 0,5 max	UNI EN ISO 10545-2
	Ortogonalità degli spigoli Corner squariness Angularité Rechtwinkligkeit der Kanten Ortogonalidad de las esquinas	%	conforme	+/- 0,6 max	UNI EN ISO 10545-2
	Planarità Flatness Planéité Ebenflächigkeit Planeidad	%	conforme	+/- 0,5 max	UNI EN ISO 10545-2
	Spessore Thickness Epaisseur Dicke Grosor	%	conforme	+/- 5,0 max	UNI EN ISO 10545-2
	Assorbimento d'acqua Water absorption Absorption d'eau Wasseraufnahme Absorción de agua	%	conforme	<= 0,5	UNI EN ISO 10545-3
	Sforzo di rottura Breaking strenght Contrainte de rupture Bruchkraft	N	conforme	≥ 1300 se sp. ≥ 7,5 mm. ≥ 700 se sp. < 7,5 mm.	UNI EN ISO 10545-4
	Resistenza a Flessione Modulus of rupture Coefficient de rupture Bruchmodul	N/mm2	conforme	>=35	UNI EN ISO 10545-4
	Resistenza ai prodotti chimici di uso domestico Resistance to chemical products Résistance aux produits chimiques Beständigkeit gegen Chemikalien Resistencia a los productos quimicos	-	conforme	MINGB	UNI EN ISO 10545-13



Basso Assorbimento
Low Absorption
Faible Absorption
Niedrige Aufnahme



Unico Calibro per i rettificati
Single Gauge for rectified items
Calibre Unique pour les rectifiés
Ein Einziges kaliber für rektifizierte Produkten



Resistenza ai prodotti chimici di uso domestico
Resistance to chemical products
Résistance aux produits chimiques
Beständigkeit gegen chemikalien



Alto Spessore
High Thickness
Grande Épaisseur
Grosse Stärke



ISO 14001

Tabella inscatolamenti

Pospetto imballi - Packaging specification - Tableau des emballages - Verpackung - Embalaje

Formato Size Format Format Formato/cm	Pz/Sc Pcs/Box Pcs/Ctn Stck/Kart Pie/Caja	Mq/Sc Sqm/Box m ² /Ctn Qm/Kart m ² /Caja	Kg/Sc	Sc/Pal Box/Pal Ctn/Pal Kart/Pal Cajas/Pal	Mq/Pal Sqm/Pal m ² /Pal Qm/Pal m ² /Pal	Kg/Pal
40x80,3 naturale	3	24	0,97	56	1344	54,32
40x80,3 grip	3	24	0,97	56	1344	54,32
39,6x79,4 rett.	3	23,2	0,94	56	1299	52,64
39,6x39,6 rett.	6	23,2	0,94	56	1299	52,64
19,7x79,4 rett.	6	23,2	0,94	56	1299	52,64



Ceramic Tiles of Italy

Metropolitan Stone



**MANIFATTURA
DEL DVCA**



Ceramiche Ricchetti



Gruppo Ceramiche Ricchetti S.p.A.
Uff. Commerciali: Via Radici in Piano, 428
41049 Sassuolo (MO) Italy
Tel. 0536.800.050 (r.a.) -
Fax 0536.805.401 - 0536.807.382 - 865.296 (Comm. le)
www.ricchetti.it - info@ricchetti.it